

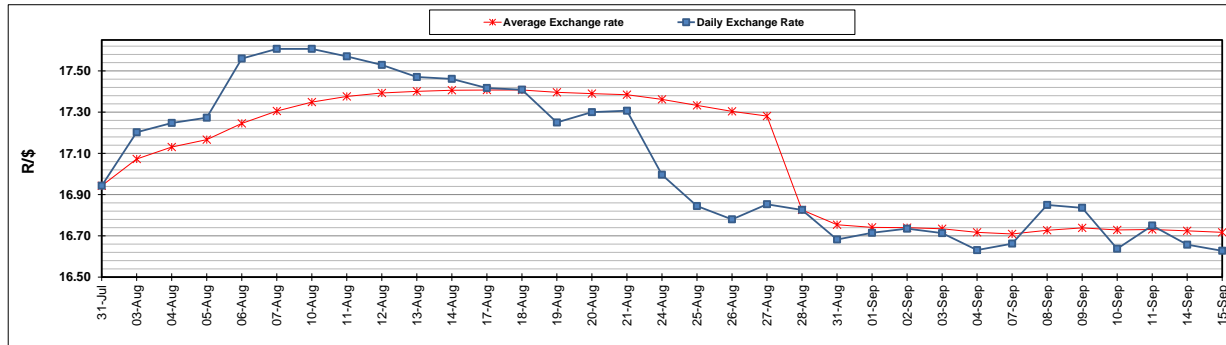
	PETROL 95 ULP	PETROL 93 ULP & LRP	DIESEL 0.05%	DIESEL 0.005%	ILL. PAR.
GAUTENG PUMP PRICE (SA c/l) AS FROM 02/09/2020	1,518.000	1,489.000	-	-	-
WHOLESALE PRICE (SA c/l) AS FROM 02/09/2020	-	-	1,327.560	1,331.960	716.828
SINGLE NATIONAL MAXIMUM RETAIL PRICE	-	-	-	-	899.000
BASIC FUEL PRICE - 15/09/2020 (SA c/l)	515.905	502.985	464.742	466.921	411.796
PRESS RELEASE CONTRIBUTION TO BFP 02/09/2020 - 15/09/2020 (SA c/l)	565.470	546.470	576.630	581.030	512.128
UNIT OVER/(UNDER) RECOVERY - 15/09/2020 (SA c/l)	49.565	43.485	111.888	114.109	100.332
AVERAGE BASIC FUEL PRICE 28/08/2020 - 15/09/2020	529.149	519.598	494.002	496.016	433.858
AVERAGE UNIT OVER/(UNDER) RECOVERY 28/08/2020 - 15/09/2020	37.314	27.865	87.474	89.860	84.270

### ANALYSIS MOVEMENT OF AVERAGE OVER/(UNDER) RECOVERY

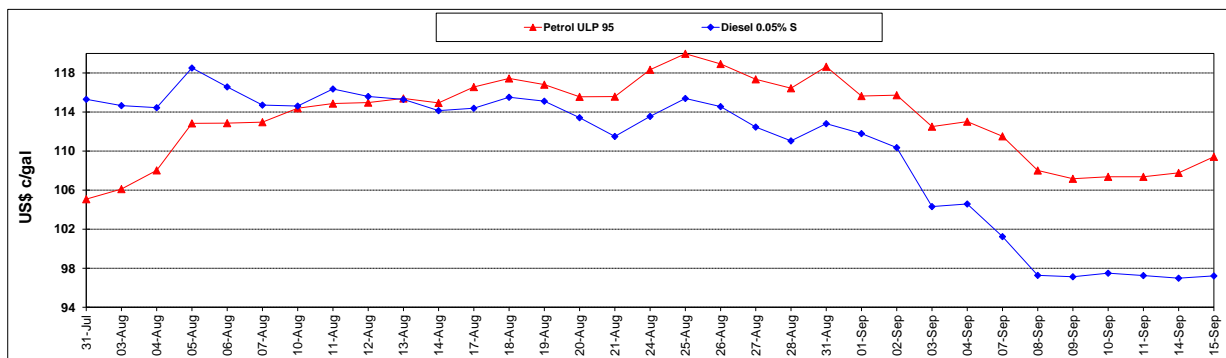
	PETROL 95	PETROL 93	DIESEL 0.05%	DIESEL 0.005%	ILL. PAR.
- MOVEMENT IN INTERNATIONAL PRODUCT PRICES	19.454	10.328	70.802	73.120	69.627
- MOVEMENT IN EXCHANGE RATE	17.859	17.536	16.672	16.740	14.643
AVERAGE UNIT OVER/(UNDER) RECOVERY 28/08/2020 - 15/09/2020	37.314	27.865	87.474	89.860	84.270

### R/\$ EXCHANGE RATE - (R/\$16.6275 - 15/09/2020)

#### EXCHANGE RATE USED IN BASIC FUEL PRICE



#### INTERNATIONAL PRODUCT PRICES OF BASKET USED IN BASIC FUEL PRICE



#### BASIC FUEL PRICE IN SA CENTS PER LITRE

